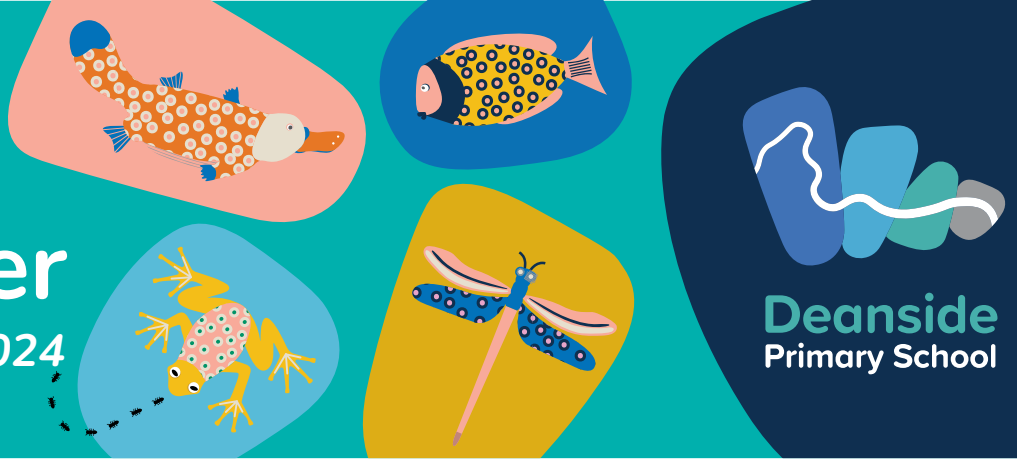


Week 2, Term 1

Newsletter

Friday 9 February 2024



Important Dates

- **Tuesday 27th February:**
Dental Van
- **Thursday 19th February:**
Dental Van
- **Friday 15th March:**
Curriculum Day (student free day)
- **Thursday 28th March:** Last day of Term 1 (2:30pm finish)

Principal Report

Dear Deanside Community,

I hope you all had a lovely safe Summer and had the opportunity to spend time with family and friends. I know that some of our families were lucky enough to travel overseas to catch up with loved ones. I have enjoyed listening to many students share stories of adventures and special moments during the holidays. Whilst we missed our students, it was great for our staff to have a well-earned break after a very busy year. Staff have returned ready and happy to start a new year at Deanside Primary School.

A very warm welcome to all our new families joining us for the first time. When I take tours or chat to new parents, I am often asked about the community and students at the school. I always reply with how lucky we are to have a community who display the values that we hold so dearly at Deanside. We are very grateful to have families who are kind, humble and respectful. Our families know that our staff are always doing their best and show gratitude for their efforts. This is also reflected in our students, who strive to be the best possible students they can be on a daily basis.

We are very fortunate to have started the year with a full quota of staff. I feel very grateful to be in the position we are in considering that many schools are facing significant challenges recruiting staff. We are very proud of the school we have created and we are extremely lucky to have such dedicated staff members driving the teaching and learning at Deanside. This year we welcome Emma Bainbridge, Anna Huynh, Richelle Reyes, Leanne Dimovska, Lanie de Castro, Svetlana Markovic, Kerri Popczyk, Melanie Soulsby, Joy Moodley, Eli Kotevski, Ashwini Karulkar and Maha Abd El Moamen. We are so lucky to have them join our amazing team and they have all started with a super positive approach to the Deanside ways.

P: (03) 8080 5444

E: deanside.ps@education.vic.gov.au

 @deansideps  @DeansidePS

Excellence

Respect

Responsibility

Care



Students of the Week

Week 1 - Term 1

1/2C- Maika Wakawaka
 1/2D – Hendrix Wakawaka
 3/4C- Malani Johnson
 5/6B – Blake Anthony
 5/6C – Bella Pirangi

I want to recognise how well all our students have started this year. Their transition into a new classroom, new year level, new school and beginning school for the first time has been so pleasing to watch. Please be super proud of your children. If you have any concerns regarding the needs of your child, please use Compass to email your child's teacher directly – they will respond to you as soon as possible.

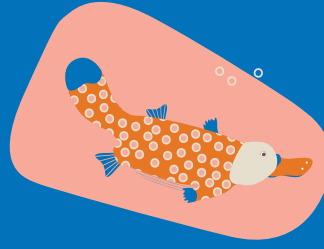
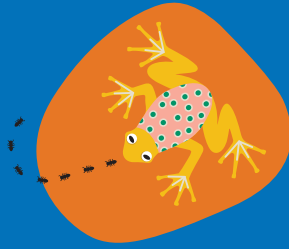
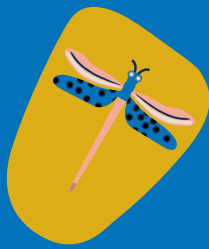
School Times

A reminder that classes begin at 9am each day. We cannot stress the importance of punctuality and being on time on a daily basis. The concept of punctuality is a lifelong skill that we must instil in our children. School gates open at 8:45am on a daily basis. If you require support for before school or after school; please contact Big Childcare. This service begins from 6:45am every morning.

Parents may pay as low as \$2.70 to access this service; depending upon the families eligibility to the Child Care Subsidy. Click here for more details about CSS - <https://bigchildcare.com/parents/>



I cannot stress the importance of students being on time for school every day, as well as attending every day. We know the impact that education has on children and their future lives. So let's continue to work together to ensure daily routines allow students to be present each and every school day. All students are expected to come to school every day that the school is open to students. Parents need to assist their child to be punctual to create the very best opportunities for their child to learn and not miss vital instruction time.



Please note; that if your child is unwell they must stay home, simply call the school (80805444) and let us know they are sick or log their illness via Compass. If students can't come to school, parents must provide an explanation for their child's absence to office on the day of the absence.

Timetable

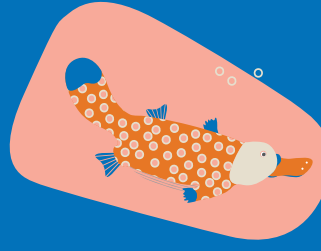
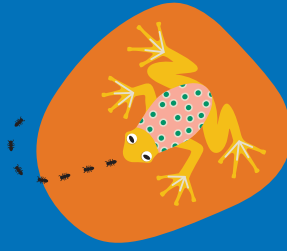
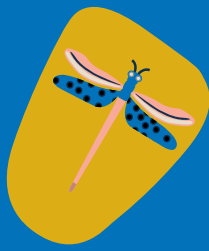
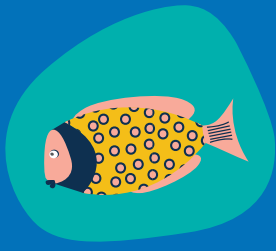
A reminder to all families that our school daily schedule looks like this ---

8:45am – 9:00am	Staff on Yard Duty
9:00am – 10:00am	Session 1
10:00am – 11:00am	Session 2
11:00am – 11:30am	Recess Staff on Yard Duty
11:30am – 12:30pm	Session 3
12:30pm – 1:30pm	Session 4
1:30pm – 1:40pm	Student Eating Lunch Time inside
1:40pm – 2:30pm	Lunch Recess Staff on Yard Duty
2:30pm – 3:30pm	Session 5
3:30pm – 3:45pm	Staff on Yard Duty

Enrolments 2024

As a new school in a new suburb, we are excited by the ongoing development. Many houses in the area are nearing completion, at the point of handover to families or increased rental opportunities being presented. This is such an exciting time for families to move into their new homes. As a result of this, students have a right to attend school at their closest neighbourhood school. This will see our school constantly growing and adjusting to the needs of our community. When our enrolments grow, we will have to ensure we maintain an open mind set on meeting the individual needs of our student. We recognise that this is an unusual scenario and we have already begun our planning to accommodate additional growth this year and support the needs of our students. As a result of this, some grades may be reallocated throughout the year; depending on what year levels students enrol in the future. It is always my goal to keep class sizes at or below the recommended levels.





As a result of this, the Grade 3/4 classes will soon become four classes due to the growth in these year levels. We are now working through a recruitment process that may take a few more weeks. Once we have finalised this and reallocated students in their classes, we will inform students and their families.

Compass, Social Media and School Website

Our main method of communicating with families is via Compass. If you have not yet downloaded the app and accessed this platform, I cannot stress how important this is to remain up to date on school events and to support your child(ren). We have sent home your login details with your child, please check your emails and follow the details of the email.

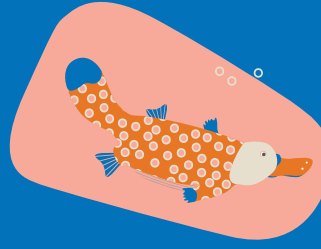
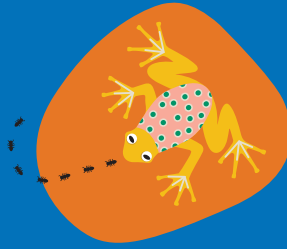
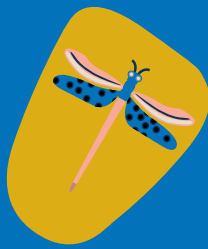
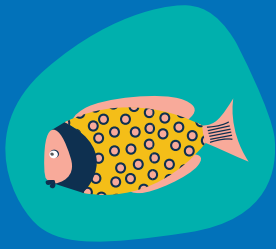
In addition to this we also use Facebook and Instagram. Facebook (www.facebook.com/DeansidePS) and Instagram (www.instagram.com/deansideps) allows us to celebrate achievements of students and share activities across the school in real time. However, we can only post photos of students to social media if you have provided consent.

Our school website - <https://deansideps.vic.edu.au/> - is also a great source of information and we are continuing to work at this platform being a great source of information.

Conservatory Drive

Last week Melton City Council informed me that Conservatory Drive would be opened by 9th February 2024. Unfortunately, I am now told this milestone will not be met due to an issue with the road being 'titled' and the traffic lights not being powered. Rest assured I have advocated for the opening of this road for a very long time and am constantly communicating the needs and frustrations of the community. I recognise that this news will be met with much frustration from many of our families.

If you are frustrated by this news, I encourage you to direct your complaint to Melton City Council via the online form found at <https://www.melton.vic.gov.au/Council/Customer-Service/Contact-Us/Report-an-issue/Road-and-footpath-repair-pot-hole-drainage>
Alternatively, you may also try calling them on 9747 7200 or email: csu@melton.vic.gov.au



2024 Preps

It has been a great joy to see our new Prep students begin their education at Deanside Primary School. It has been a most successful start to the year and they have transitioned in to school life with a smile on their face. The Prep teachers have been so impressed with the way the students have adjusted. I have included a '10 tip sheet' that supports children in starting at school and establishing good routines. Next week reality will 'kick in' and we will see our Prep children at school for the whole day. Yes, they will come home tired. Yes, they be grumpy at the end of the school day. Developing healthy food eating, drinking plenty of water and a consistent sleeping routine will reduce the tiredness.



1. Tell me something new that you learnt today?
2. What's something that made you laugh?
3. What are you looking forward to tomorrow?

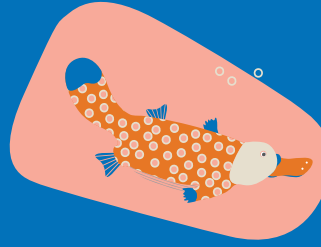
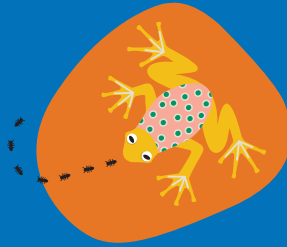
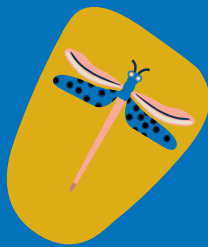
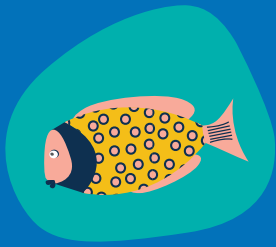
By asking the same three questions each day, my girls knew that the questions were coming and ended up preparing their answers. I certainly found this a more rewarding conversation than "How was school?" and the answer being "Good".

School Assembly

There will be an assembly every Friday afternoon @ 3:00pm in the gym. Parents are always welcome to attend. Gates open at 2:45pm.

Curriculum Days for Term 1

Towards the end of last year School Council endorsed Curriculum Days for Term 1 2024. Our first Curriculum Day for 2024 is 15th March. They are pupil free days – so children do not come to school. We will always attempt to provide our families with as much notice as possible to ensure that care can be provided on these days if you have work commitments. Alternatively, you may consider using Big Childcare for support on those days. Please add these dates to your diaries.



Scooters and bikes

Scooters and bikes are a great way for kids to travel to school. We ask that parents teach their child about road and bike safety before they ride to school. Did you know that.....



- You can only ride on a footpath if you are under the age of 12 or an adult (18 years or older) supervising a child under 12
- When riding on a footpath, you must keep to the left and give way to pedestrians.

A reminder to parents and children that school policy and Victorian Law requires all children who wish to ride a bicycle to and from school, must wear a safety helmet approved by the Australian Safety Association.

Each day bikes and scooters will be locked in a secure location in the bike cage at the front of the school on Conservatory Drive. Did you know that if you do not wear an approved helmet while riding, police have the power to stop you and issue either a warning or a fine. Fines for failing to wear a helmet or carrying a passenger who is not wearing a helmet range from \$231 to \$925 Please note : e-scooters or powered bikes are **not** permitted at school.



Cars and Safety Reminder

Parents are not permitted to drive vehicles into the staff car park when bringing their children to or collecting them from school. It is extremely dangerous as it creates a traffic hazard as well as places students in 'out of bounds' area.



Parents are also required not to park on the school crossings. It is a parking infringement and as such, offenders may be fined.

Please ask that your children cross the roads at the designated school crossing points where possible.

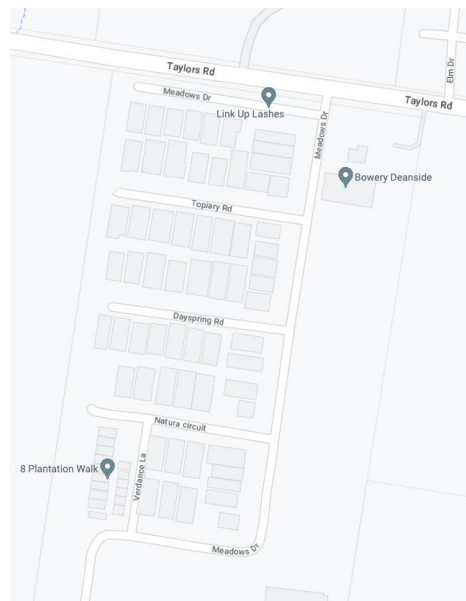
Where possible, students should always exit the vehicle on the 'curb side'. Opening car doors into traffic can create dangerous situations.

I want to also highlight that the street speed limit is 40km/h around the school. Please make sure that you obey this restriction and drive safely around the school. Children can be highly unpredictable at times, by travelling at this speed it will allow for better reaction times as a driver if a child was to run on the road.

Dropping off and picking up students adds some pressure to the current road infrastructure



around the school. I want to highlight to parents that if you are dropping your child(ren) off between 8:45am and 9:00am at the rear of the school, please leave via Leave via Verdance Lane & Natura Circuit. By adopting this method of leaving the school, it will allow traffic to flow with more ease as it will eliminate U turns which have created many 'near misses' with pedestrians and other vehicles. Below are some maps to show the suggested traffic flow.



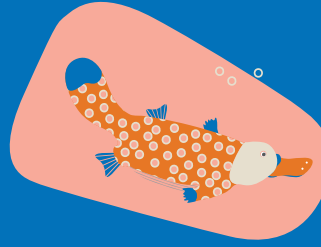
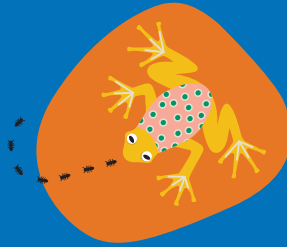
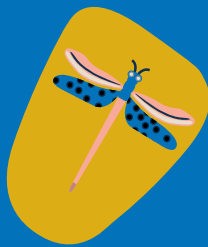
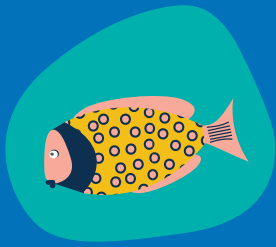
Student Accident Insurance

The Department of Education (DET) **does not** provide personal accident insurance for students. Parents and guardians are responsible for paying the cost of medical treatment for injured students, including any transport costs. These costs may be recoverable where an injury is caused by the negligence (carelessness) of the Department, a school council or their employees or volunteers.

Student accident insurance policies are available from some commercial insurers. These cover a range of medical expenses not covered by Medicare or private health insurance. The Department cannot advise parents/guardians on whether to purchase a student accident policy or which policy to purchase. It is recommended that they seek assistance in this matter with their insurance broker or find a suitable personal accident insurer.

Reasonable low-cost accident insurance policies are available from commercial insurers. Parents and guardians of students who do not have student accident insurance/ambulance cover, are responsible for paying the cost of medical treatment for injured students including the cost of ambulance attendance or transport. Parents are able to take out private Student Cover accident insurance if they choose to via www.studentcover.com.au in addition to this family ambulance cover is also encouraged.

Details about ambulance cover can also be located at - <https://www.ambulance.vic.gov.au/membership/>



School Uniform

This week I met with our school uniform provider to express my frustration at the availability of stock not being available in store. PSW have admitted this error and have provided the school with non-branded items while they await stock to arrive.

If you are waiting on a bucket hat or size 4 or size 18 drill pants and have proof of your order with PSW, simply provide this as evidence and we will happily provide the item FREE of charge while we await the branded stock to arrive.

Sunsmart Policy and Days of Extreme Heat

Children in years Prep – 6 must be wearing an approved school hat this term. On days when the temperature reaches 35 degrees or above a “Sweat Day” inclement timetable will be implemented. This means that the children will play in their classrooms during recess. Some discretion will occur prevailing weather condition (e.g. hot north wind) regarding the temperature which activates the ‘Sweat Day’ timetable will affect and time spent inside particularly with the younger children.

As all classrooms are air-conditioned there is no need for children to have their educational program interrupted by removal from school on extreme hot days.



Annual privacy reminder

As set by DET - Our school collects, uses, discloses and stores student and parent personal information for standard school functions or where permitted by law, as stated in the Schools’ Privacy Policy -

<https://www.education.vic.gov.au/Pages/schoolsprivacypolicy.aspx>

For more information about privacy, refer to: Schools’ Privacy Policy — information for parents. This information is also available in nine community languages: Amharic / Arabic / Dari / Mandarin / Somali / Sudanese / Turkish / Urdu / Vietnamese.



School Values

Our School values are important to us. Remember to Respect, Be Responsible, Strive for Excellence and show genuine Care for others and the environment.

The dedicated staff at Deanside look forward to celebrating the success of your child's learning with you and your child. Looking forward to an amazing year of learning and student growth in 2024!

Please note that school newsletters are published fortnightly (even school weeks).

Stuart Telford
Principal

Deanside Primary School is committed to child safety. We want children to be safe, happy and empowered.

PROTECT

Protecting children & young people
from abuse is our responsibility



We respectfully acknowledge the Traditional Owners of country throughout Victoria and pay respect to the ongoing living cultures of First Peoples.



Assistant Principal Reports

Start Up Program

Our Start Up program is well underway, and our students are being immersed in building their understanding of our School Expectations, as well as developing relationships and friendships with their class.

This week also saw our Reading, Writing and Numeracy Start Up programs begin, with students being engaged in understanding themselves as readers, writers, and mathematicians, as well as sorting through their classroom libraries and choosing books for their Reading Toolkits. We look forward to what the final week of our Start Up program will bring.

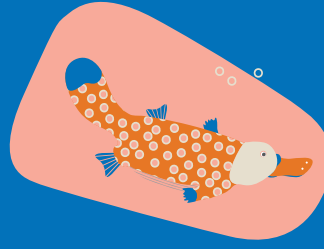
Information regarding home learning (homework) and Reading Diaries will come out in the next couple of weeks.

P: (03) 8080 5444

E: deanside.ps@education.vic.gov.au

 @deansideps  @DeansidePS





Nuts and Allergies

Please be mindful that we have a few children currently in our school who are anaphylactic to nuts and eggs. To ensure the safety of these students, we ask that parents be mindful to not add **nuts, nut products/spreads or eggs** into their children's lunch boxes. As we cannot be totally nut-free, we can definitely try to aim for as little exposure to nuts as possible.

We appreciate your support in this. If you have any concerns or questions, please come and see me.

Celebrating Birthdays

We acknowledge the importance of celebrating your child's birthday with their school friends. We love singing Happy Birthday to those who are celebrating. As much as possible, we will make your child's birthday special at school. However, **we do not accept any food/cake for birthdays**, as we want to ensure the safety of all our children. We are more than happy to hand out party favour bags, however, **please note that no lollies/food are to be added to those bags**. Each student's birthday will be recognised at assembly each week.

NAPLAN

NAPLAN is the National Assessment Program in Literacy and Numeracy for students in Year 3 & Year 5. The tests are broken up into 4 areas, which include Writing, Reading, Numeracy and Conventions of Language.

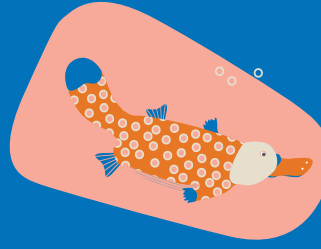
This year, NAPLAN will be held over a two-week period in **weeks 7 and 8** of term 1. More specific information for families who have children in Year 3 & Year 5 will be sent via compass next week, regarding dates, times and parent information.

Lina Stephens
Assistant Principal

Lucky Duck Challenge!

Our Lucky Duck Challenge began on Monday and the students have been very eager to search the play areas for a lucky duck. Each student that finds a lucky duck earns their grade 1 point. Some lucky ducks are 'extra lucky' ducks and are worth 2, 5 or even 10 points. At the end of the term, the grade with the most points- 'The Ultimate Lucky Ducks' will get a casual clothes day and a Zooper Dooper each.

The luckiest grade so far is 3/ 4C with 11 points- what a great start!



Next week we will be having a Double Duck Week. Mrs B will be hiding 20 ducks throughout the week. How exciting!

Food at School

A reminder that all students require a fruit snack, morning tea and lunch to keep them sustained throughout the school day. All classes have a Fruit Break a 10am each day and are given time to eat their morning tea and lunch in class before heading outside to play.

If any families need support with providing lunch to their child/ren each day, please contact Emma Bainbridge.

Emma Bainbridge
Assistant Principal

Camps, Sports and Excursions Fund

The Camps, Sports and Excursions Fund (CSEF) will provide payments for eligible students to attend camps, sports and excursions.

Eligibility:

Families holding an eligible Centrelink Health Care Card, Pensioner Concession Card, Veterans Affairs Gold Card on the first day of Term 1 or the first day of Term 2 or be a temporary foster parent are eligible to apply for CSEF.

How to Apply:

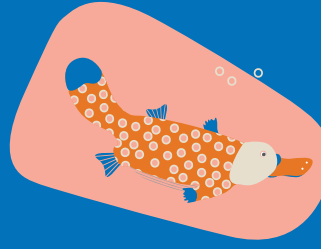
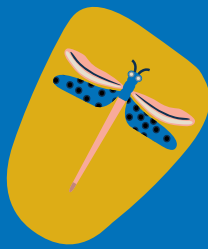
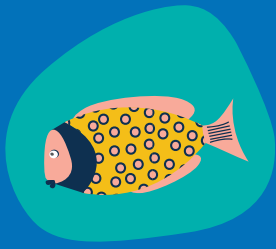
Application forms are available from the Deanside Primary School Office. The form will need to be completed and returned to the school office by **21 June 2024 (no applications will be accepted after the closing date)**.

If you applied for CSEF at Deanside Primary School in 2023 there is no need to complete another application.

If you have any queries please speak to Shana or Sue in the office.

Reader Satchels

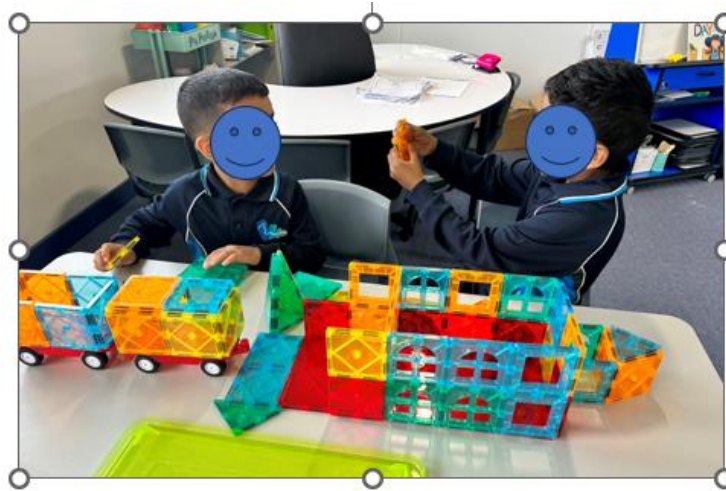
Please note that all students will require a reading satchel. Prep students are provided with a satchel from Deanside Primary School as part of the transition pack, however, if Grade One – Grade Six students do not have a satchel they are available to purchase from our uniform supplier, PSW.

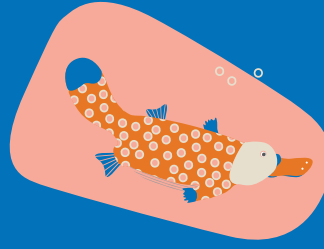
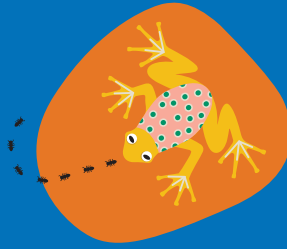
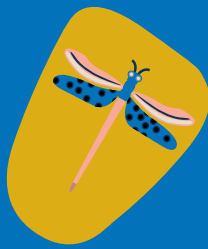
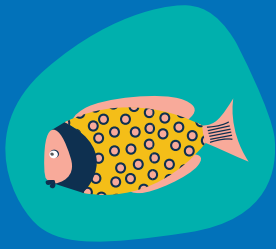


News from the Prep Classes

The Preps have had a wonderful start to the year and have settled in beautifully to school-life. From reading, writing, drawing, colouring, counting, to creating patterns, and so much more! We are particularly impressed with how well the children are working collaboratively together. They are making lots of new friends and showing a lot of care and empathy when a classmate is upset or has no one to play with in the yard. It is amazing that our Prep students are already showing all of our school values of Excellence, Respect, Care and Responsibility.

Ms Melissa, Miss Anna, Miss Richelle and Miss Merryn





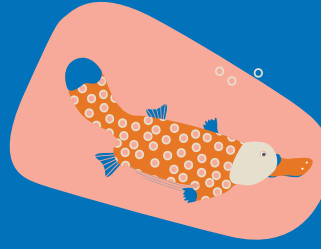
News from Grade 1/2 Classes

It has been wonderful to welcome our 1/2 students to our learning community and have such a positive start to the year. The past two weeks have been very busy, as we have been focussing on building positive relationships in our classrooms, while learning about routines and expectations. We have been focussing on our school values of Respect, Excellence, Care & Responsibility, by unpacking their meaning and discussing how we can show these values both in and out of the classroom. Our students have also been creating an inviting learning environment by organising their classroom libraries and Reader's Toolkits, as well as familiarising themselves with the maths equipment. It has been pleasing to see the children reconnect with old friends and develop new friendships since beginning the new year.

We look forward to an amazing year!

Mrs Stirrup, Ms Dimovska, Ms Tara, Ms Danielle, Ms Maddi & Ms Sacco





News from Grade 3/4 Classes

What a wonderful start to the year in 3/4!

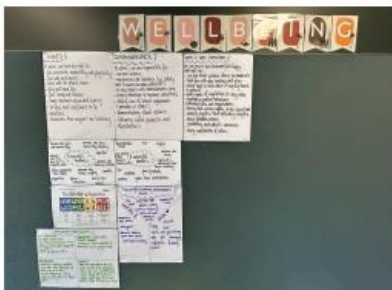
We have been settling in nicely into our classrooms and getting a lot of organising done. Creating a welcoming and warm space has been our priority. We did this by playing many games and about me activities to get to know all the new bright faces that have joined us.

We have also been preparing ourselves as writers, mathematicians and organising our classroom libraries.

Our focus has also been on our rights and responsibilities as students and how we can be successful and safe in our school.

We look forward to the rest of our first term of the year!

Ms Lanie, Ms Jess & Ms Jules





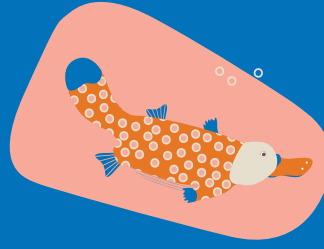
News from Grade 5/6 Classes

What a successful start to the year we have had in 5/6! We have focused on developing new routines and processes within our Learning Community, as well as celebrating the uniqueness of each individual. We have enjoyed actively participating in collaborative tasks, such as our 'Island Adventure' that required essential skills such as communication, compromise and problem solving. One component involved helping our classmates safely across the 'island', otherwise known as our Sports Field. It involved many laughs!

As we are the new school leaders, we are also focusing on the ways in which we can set examples for other students in the school, by modelling expected behaviours within our school community. We look forward to achieving new goals this year and having lots of fun whilst doing so!

Miss Jade, Miss Jess and Miss Markovic

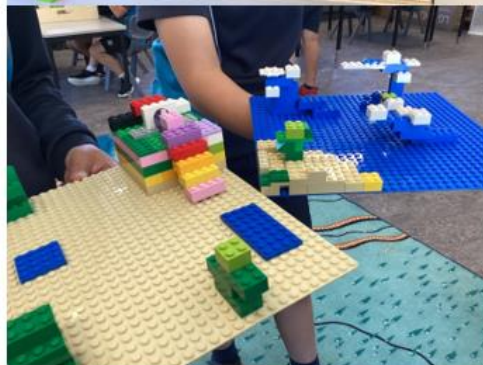




News from STEM

The Grade 5/6 students collaboratively explored classroom expectations in the STEM room. This week we focused on the school value of Respect, and spoke about the ways we show respect in the STEM room. The students chose from various activities that encouraged skills from areas of all Science, Technology, Engineering and Mathematics.

Mrs Lay



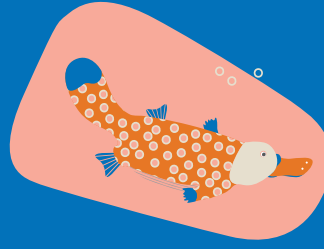


News from Kitchen Garden Program

The Grade 3/4 students have enjoyed the opportunity to explore the new Kitchen Garden classroom. They have been learning about routines, expectations and how the Deanside values align with Kitchen Garden lessons. All students now know how to fold up gloves, so you can get them to apply these skills on your sock basket at home! Lastly, the students had fun getting their hands dirty while weeding the garden and then getting the opportunity to test out their new handwashing skills.

Mel





News from Visual Arts

It has been a wonderful start to the year. 1/2s have been learning about the routines and expectations and the importance of using your imagination when being creative in Art. They used one black marker to decorate their folders, drawing what they visualised.

Ms Popcczyk

